

NÖREMAC®
Windows & Doors

10/22 Bridge Street, Eltham AUSTRALIA 3095
Phone +61 (03) 9439 - 2365 Fax +61 (03) 9439 - 6578
info@normacwindows.com.au www.normacwindows.com.au

Normac Windows
Timber Window Diagrams &
Specifications

Please use these details when
referring to drawings

20.11.2013

Drawing Reference #0001 #NW/AS

Viewing - OUTSIDE

The following drawings are to be used as a guide only.

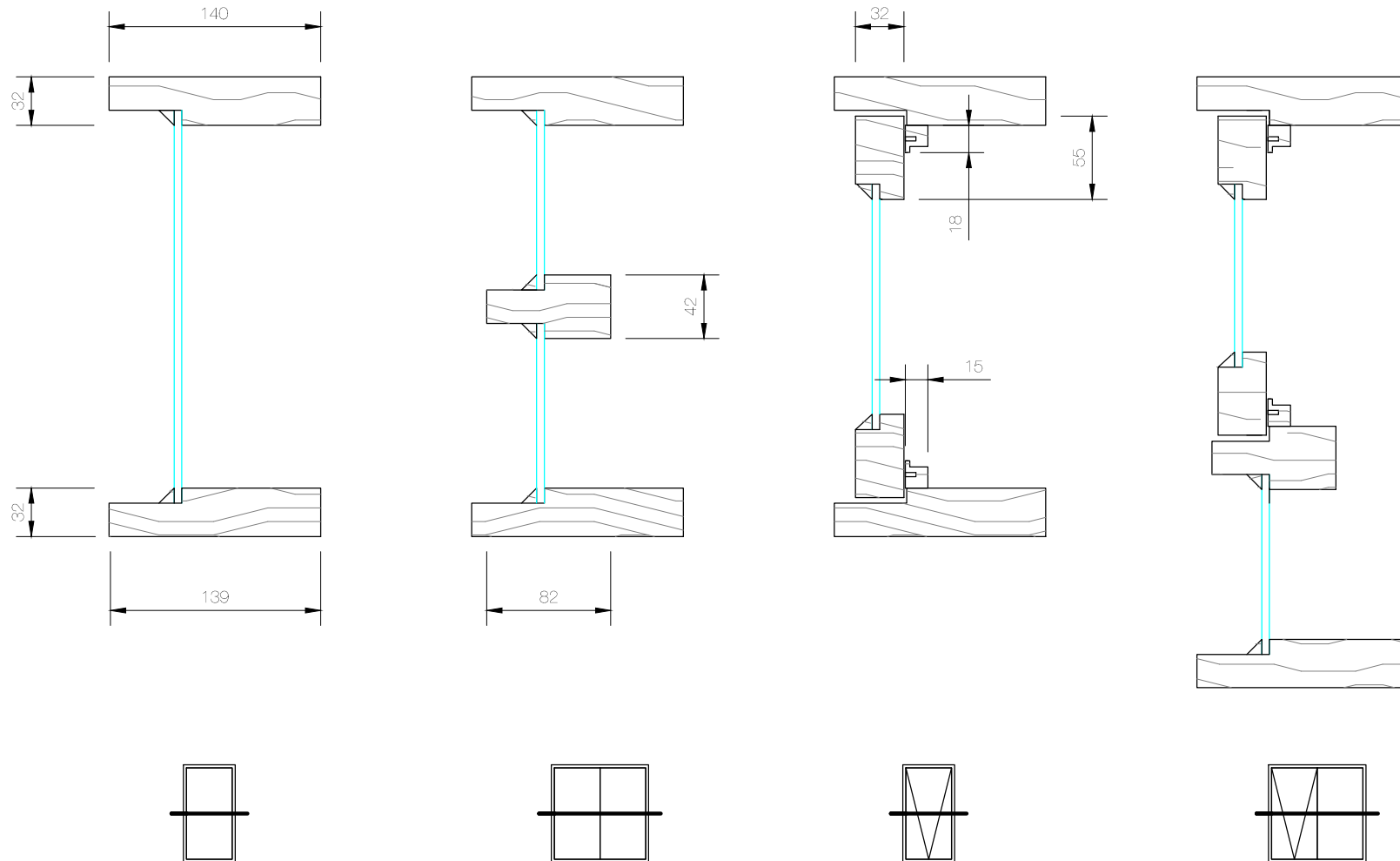
All drawings are not to scale. Refer to dimensions indicated.

Drawings are accurate as per date indicated. Please contact Normac Windows to confirm current specification.

All drawings remain the property of Normac Window. They cannot be reproduced or copied without prior consent.

AWNING SETOUT Section

Single glazing
Flyscreen compatible
Includes wing moulds (opt)
Hardware - Whitco awning winder
Whitco hook hinges



NÖREMAC®
Windows & Doors

10/22 Bridge Street, Eltham AUSTRALIA 3095
Phone +61 (03) 9439 - 2365 Fax +61 (03) 9439 - 6578
info@normacwindows.com.au www.normacwindows.com.au

Normac Windows
Timber Window Diagrams &
Specifications

Please use these details when
referring to drawings

20.11.2013

Drawing Reference #0002 #NW/AP

Viewing - OUTSIDE

The following drawings are to be used as a guide only.

All drawings are not to scale. Refer to dimensions indicated.

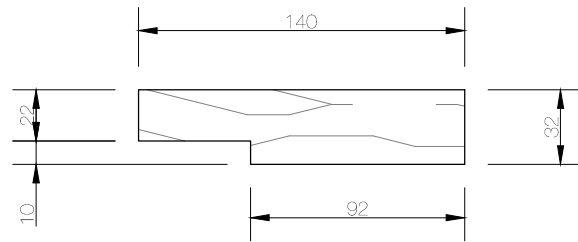
Drawings are accurate as per date indicated. Please contact Normac Windows to confirm current specification.

All drawings remain the property of Normac Window. They cannot be reproduced or copied without prior consent.

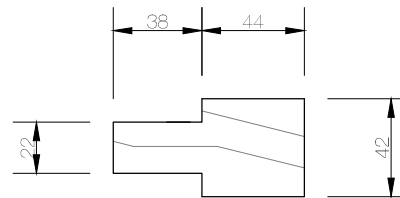
AWNING SETOUT Plan

Single glazing
Flyscreen compatible
Includes wing moulds (opt)
Hardware - Whitco awning winder
Whitco hook hinges

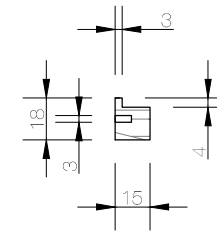
Stile



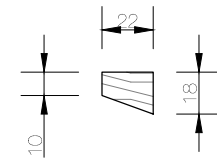
Mullion



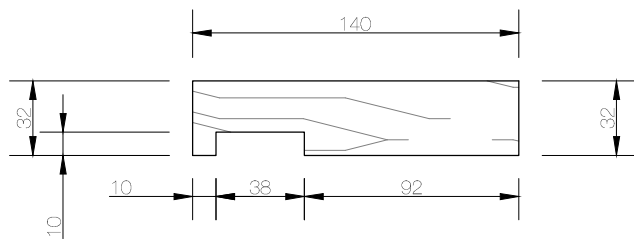
Weather Seal Bead



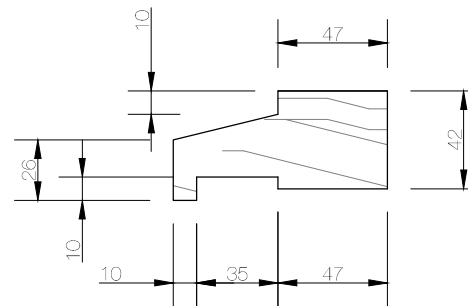
Wind Mould



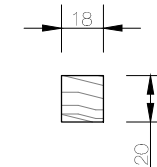
Head



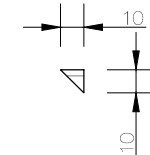
Transom



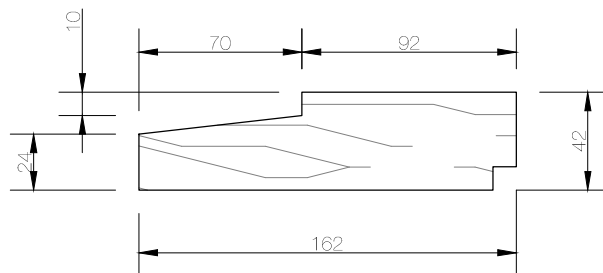
Plant Bead



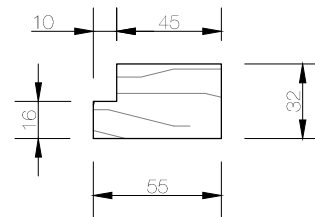
Glazing Bead



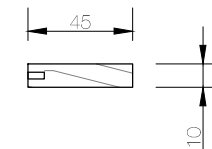
Sill



Sash



Weather Seal Bead



NÖREMAC[®]

Windows & Doors

10/22 Bridge Street, Eltham AUSTRALIA 3095
 Phone +61 (03) 9439 - 2365 Fax +61 (03) 9439 - 6578
 info@normacwindows.com.au www.normacwindows.com.au

Normac Windows
 Timber Window Diagrams &
 Specifications

Please use these details when
 referring to drawings

20.11.2013

Drawing Reference #0007 #NW/AD

Viewing - OUTSIDE

The following drawings are to be used as a
 guide only.

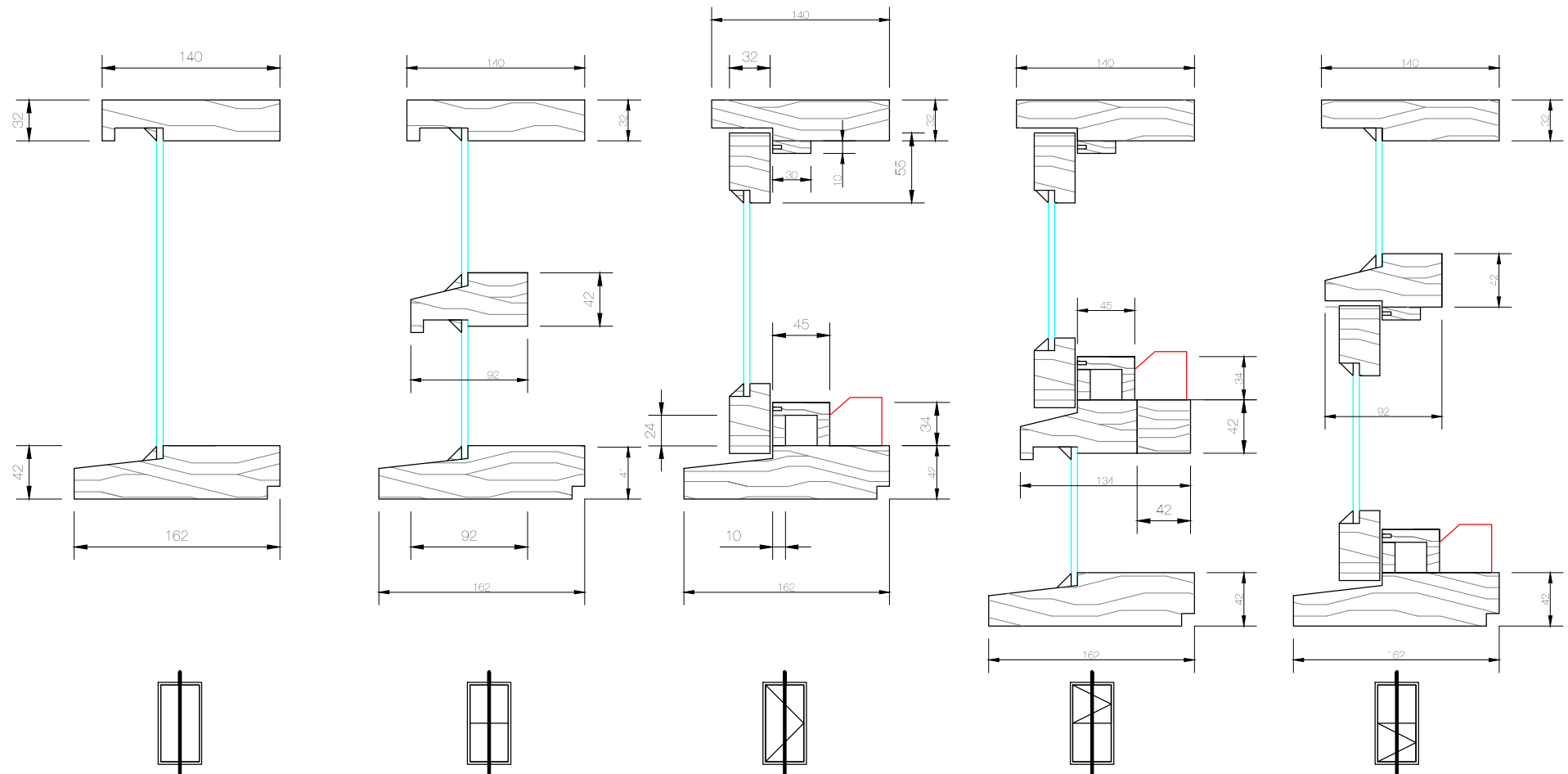
All drawings are not to scale. Refer to
 dimensions indicated.

Drawings are accurate as per date indicated.
 Please contact Normac Windows to confirm
 current specification.

All drawings remain the property of Normac
 Windows. They cannot be reproduced or
 copied without prior consent.

AWNING PROFILES Elevation

Single glazing
 Flyscreen compatible
 Includes wing moulds (opt)
 Hardware - Whitco spiral balances
 Whitco sash pulls
 Whitco sash locks



NÖREMAC[®] 
Windows & Doors


10/22 Bridge Street, Eltham AUSTRALIA 3095
Phone +61 (03) 9439 - 2365 Fax +61 (03) 9439 - 6578
info@normacwindows.com.au www.normacwindows.com.au

Normac Windows
Timber Window Diagrams &
Specifications

Please use these details when
referring to drawings

20.11.2013

Drawing Reference #0003 #NW/CS

 Viewing - OUTSIDE

The following drawings are to be used as a
guide only.

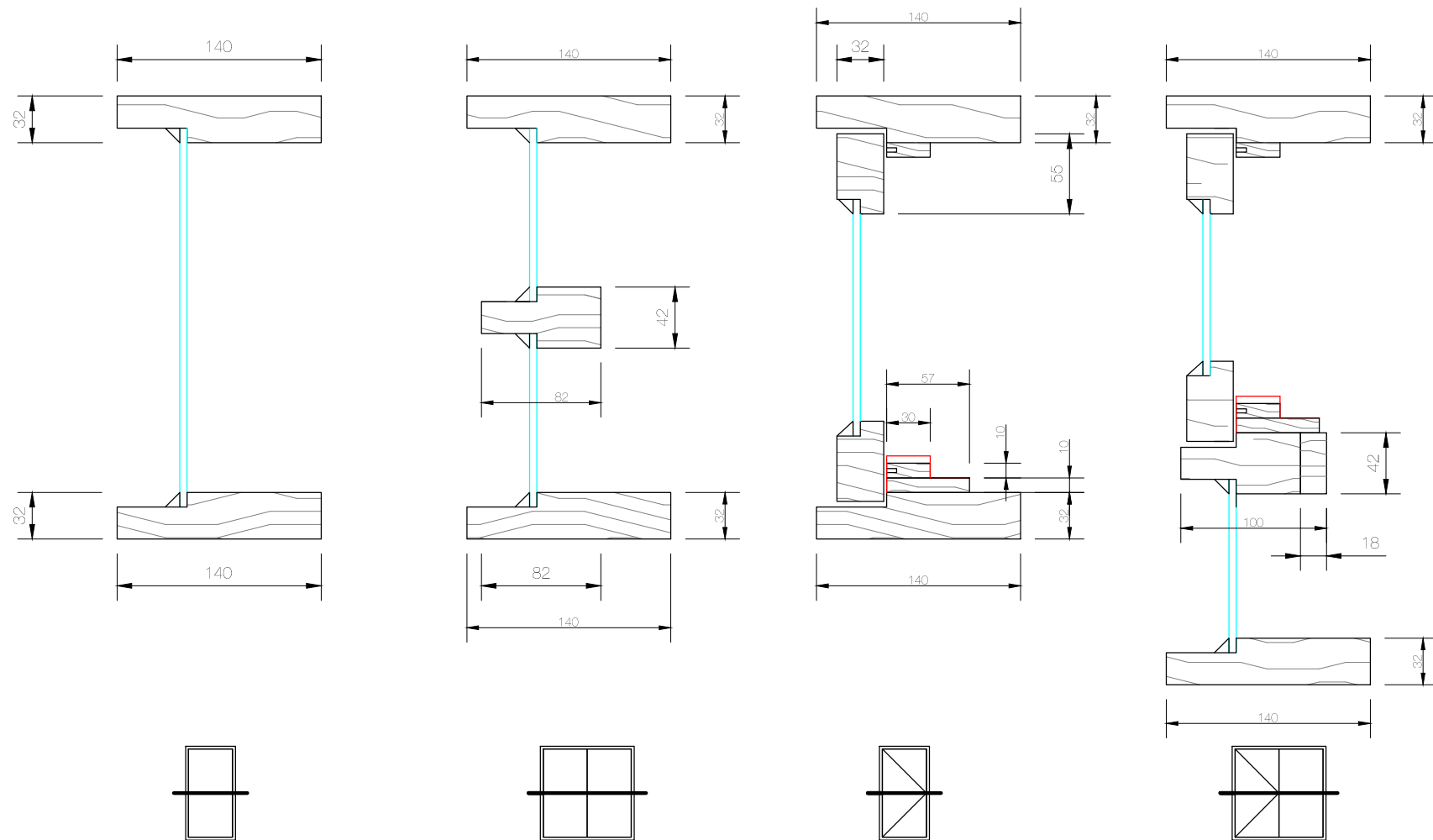
All drawings are not to scale. Refer to
dimensions indicated.

Drawings are accurate as per date indicated.
Please contact Normac Windows to confirm
current specification.

All drawings remain the property of Normac
Windows. They cannot be reproduced or
copied without prior consent.

CASEMENT SETOUT Section

Single glazing
Flyscreen compatible
Includes wing moulds (opt)
Hardware - Truth casement winders
Truth casement hinges
Truth sash locks



NÖREMAC[®] 
Windows & Doors


10/22 Bridge Street, Eltham AUSTRALIA 3095
Phone +61 (03) 9439 - 2365 Fax +61 (03) 9439 - 6578
info@normacwindows.com.au www.normacwindows.com.au

Normac Windows
Timber Window Diagrams &
Specifications

Please use these details when
referring to drawings

20.11.2013

Drawing Reference #0004 #NW/CP

 Viewing - OUTSIDE

The following drawings are to be used as a
guide only.

All drawings are not to scale. Refer to
dimensions indicated.

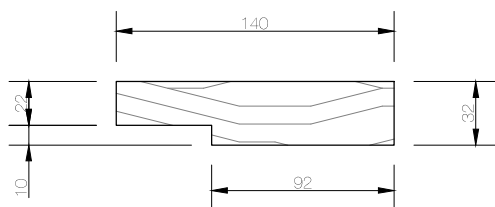
Drawing are accurate as per date indicated.
Please contact Normac Windows to confirm
current specification.

All drawings remain the property of Normac
Window. They cannot be reproduced or
copied without prior consent.

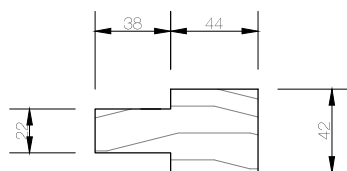
CASEMENT SETOUT Plan

Single glazing
Flyscreen compatible
Includes wing moulds (opt)
Hardware - Truth casement winders
Truth casement hinges
Truth casement sash locks

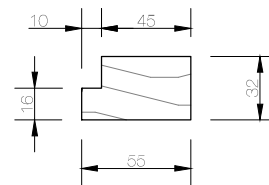
Stile



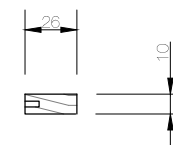
Mullion



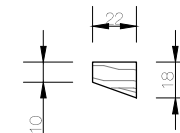
Sash



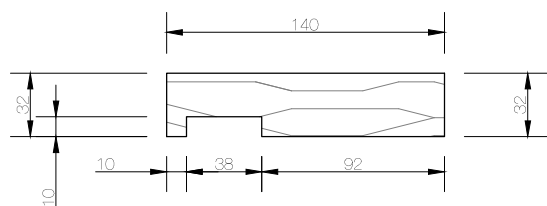
Weather Seal Bead



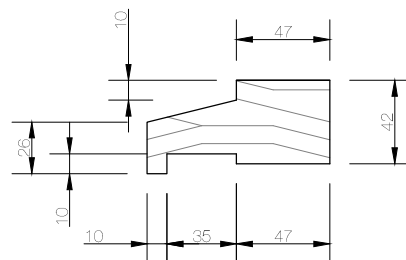
Wind Mould



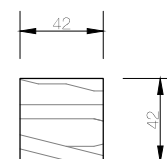
Head



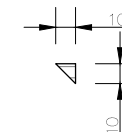
Transom



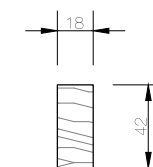
Transom Bead



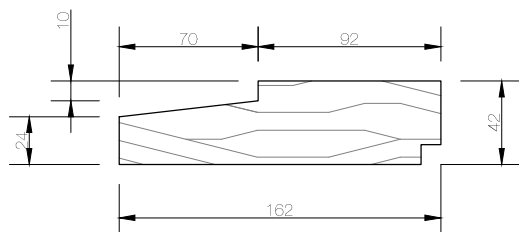
Glazing Bead



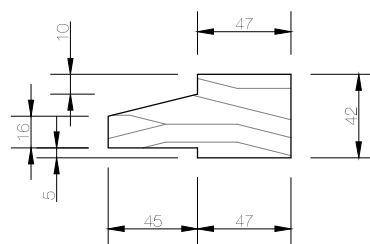
Mullion Bead



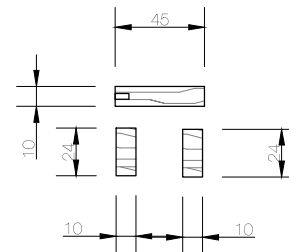
Sill



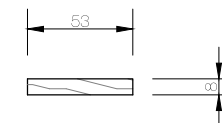
Transom with Sash



Winder Beads



Casement Lock Bead



NÖREMAC[®]
Windows & Doors

10/22 Bridge Street, Eltham AUSTRALIA 3095
Phone +61 (03) 9439 - 2365 Fax +61 (03) 9439 - 6578
info@normacwindows.com.au www.normacwindows.com.au

Normac Windows
Timber Window Diagrams &
Specifications

Please use these details when
referring to drawings

20.11.2013

Drawing Reference #0008 #NW/CD

Viewing - OUTSIDE

The following drawings are to be used as a
guide only.

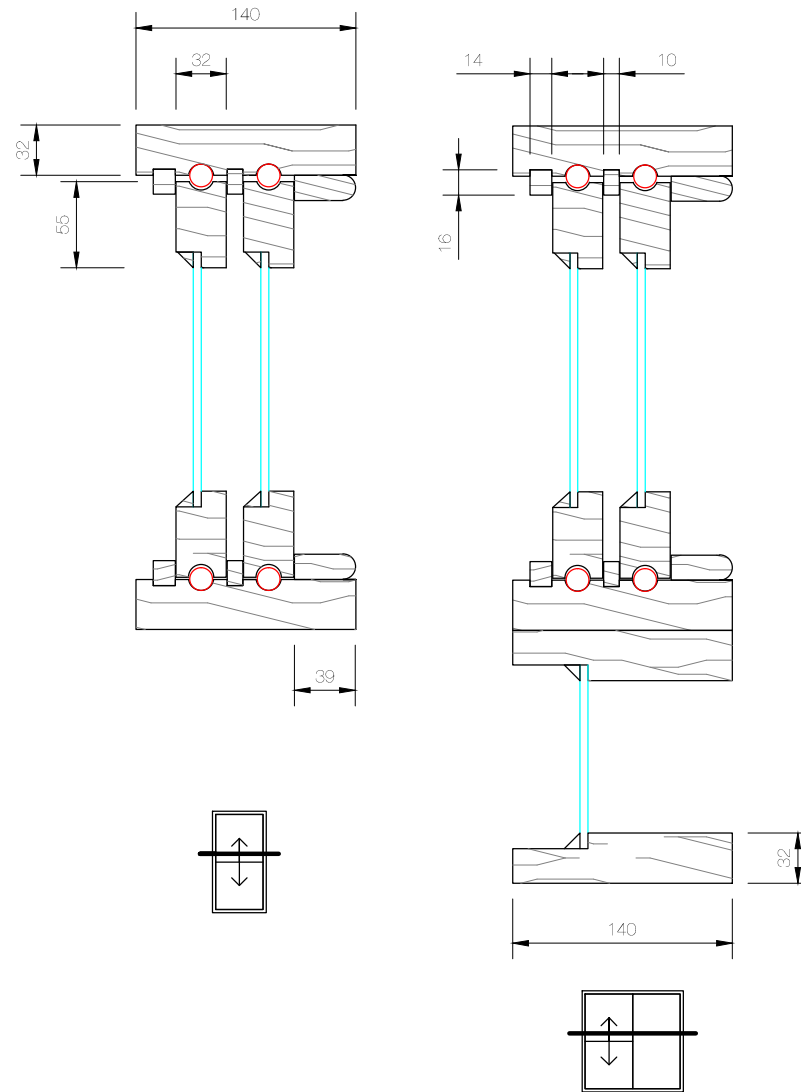
All drawings are not to scale. Refer to
dimensions indicated.

Drawings are accurate as per date indicated.
Please contact Normac Windows to confirm
current specification.

All drawings remain the property of Normac
Window. They cannot be reproduced or
copied without prior consent.

CASEMENT PROFILES Elevation

Single glazing
Flyscreen compatible
Includes wing moulds (opt)
Hardware - Truth casement winders
Truth casement hinges
Truth casement sash locks



NÖREMAC[®]
Windows & Doors

10/22 Bridge Street, Eltham AUSTRALIA 3095
Phone +61 (03) 9439 - 2365 Fax +61 (03) 9439 - 6578
info@normacwindows.com.au www.normacwindows.com.au

Normac Windows
Timber Window Diagrams &
Specifications

Please use these details when
referring to drawings

20.11.2013

Drawing Reference #0005 #NW/DP

Viewing - OUTSIDE

The following drawings are to be used as a guide only.

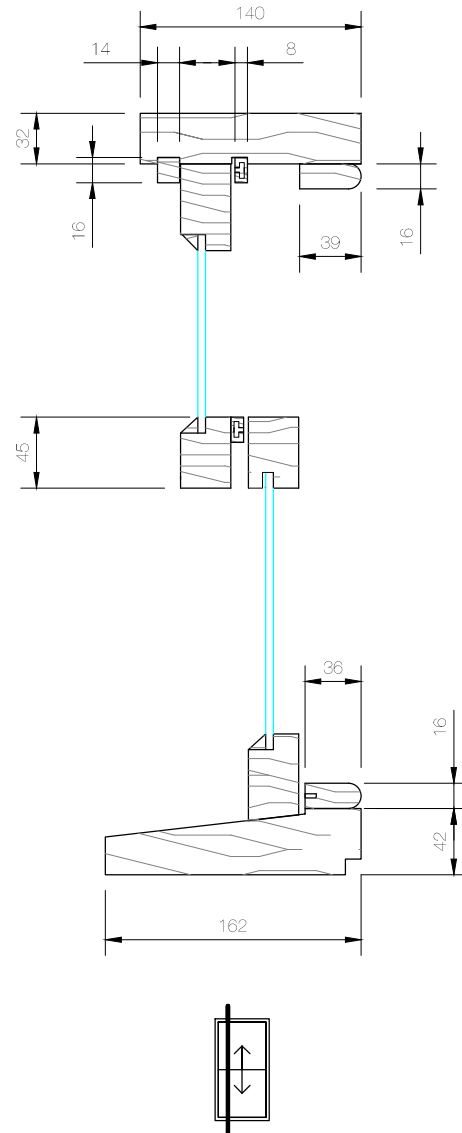
All drawings are not to scale. Refer to dimensions indicated.

Drawings are accurate as per date indicated. Please contact Normac Windows to confirm current specification.

All drawings remain the property of Normac Window. They cannot be reproduced or copied without prior consent.

DOUBLE HUNG SETOUT Plan

Single glazing
Flyscreen compatible
Includes wing moulds (opt)
Hardware - Whitco spiral balances
Whitco sash pulls
Whitco sash locks



NÖREMAC
Windows & Doors

10/22 Bridge Street, Eltham AUSTRALIA 3095
Phone +61 (03) 9439 - 2365 Fax +61 (03) 9439 - 6578
info@normacwindows.com.au www.normacwindows.com.au

Normac Windows
Timber Window Diagrams &
Specifications

Please use these details when
referring to drawings

20.11.2013

Drawing Reference #0006 #NW/DS

Viewing - OUTSIDE

The following drawings are to be used as a guide only.

All drawings are not to scale. Refer to dimensions indicated.

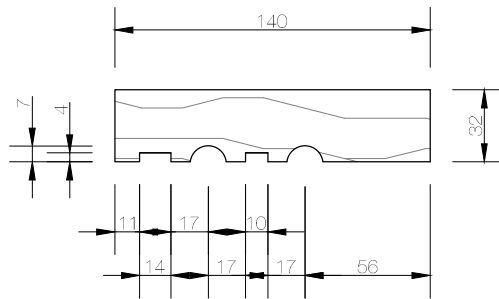
Drawings are accurate as per date indicated. Please contact Normac Windows to confirm current specification.

All drawings remain the property of Normac Window. They cannot be reproduced or copied without prior consent.

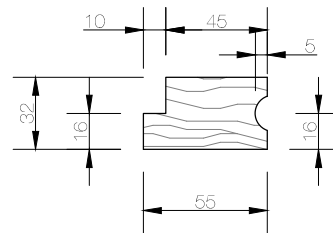
DOUBLE HUNG SETOUT Section

Single glazing
Flyscreen compatible
Includes wing moulds (opt)
Hardware - Whitco spiral balances
Whitco sash pulls
Whitco sash locks

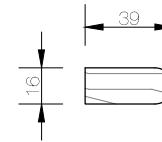
Head & Stile



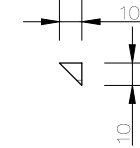
Sash Stiles



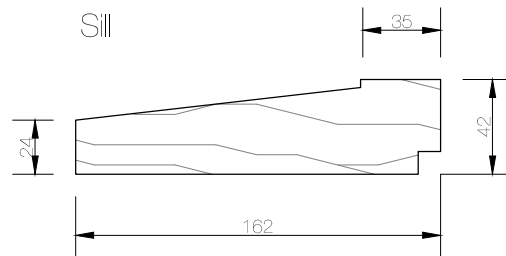
Staff Bead



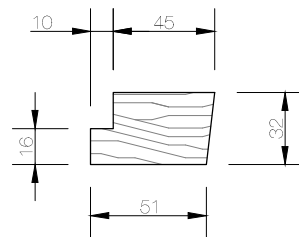
Glazing Bead



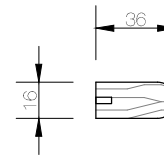
Sill



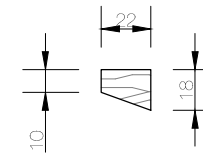
Bottom Sash



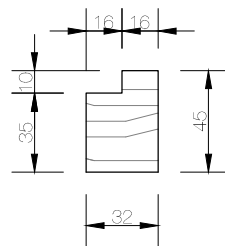
Bottom Staff Bead



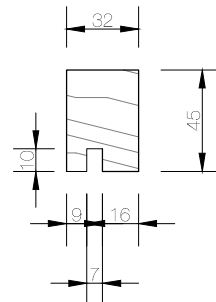
Wind Would



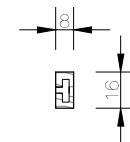
Meeting Rails



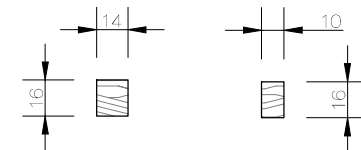
Meeting Rails



Top and Mid Parting Bead



End Stop & Parting Bead



NÖREMAC[®]
Windows & Doors

10/22 Bridge Street, Eltham AUSTRALIA 3095
Phone +61 (03) 9439 - 2365 Fax +61 (03) 9439 - 6578
info@normacwindows.com.au www.normacwindows.com.au

Normac Windows
Timber Window Diagrams &
Specifications

Please use these details when
referring to drawings

20.11.2013

Drawing Reference #0009 #NW/DD

Viewing - OUTSIDE

The following drawings are to be used as a guide only.

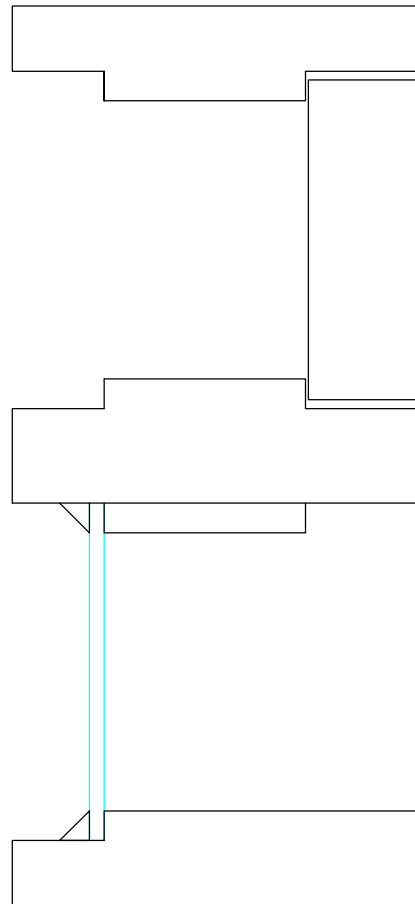
All drawings are not to scale. Refer to dimensions indicated.

Drawings are accurate as per date indicated. Please contact Normac Windows to confirm current specification.

All drawings remain the property of Normac Window. They cannot be reproduced or copied without prior consent.

DOUBLE HUNG PROFILES Profiles

Single glazing
Flyscreen compatible
Includes wing moulds (opt)
Hardware - Whitco spiral balances
Whitco sash pulls
Whitco sash locks




10/22 Bridge Street, Eltham AUSTRALIA 3095
 Phone +61 (03) 9439 - 2365 Fax +61 (03) 9439 - 6578
 info@normacwindows.com.au www.normacwindows.com.au

Normac Windows
 Timber Window Diagrams &
 Specifications

Please use these details when
 referring to drawings

20.11.2013

Drawing Reference #0010 #NW/EP

 Viewing - OUTSIDE

The following drawings are to be used as a
 guide only.

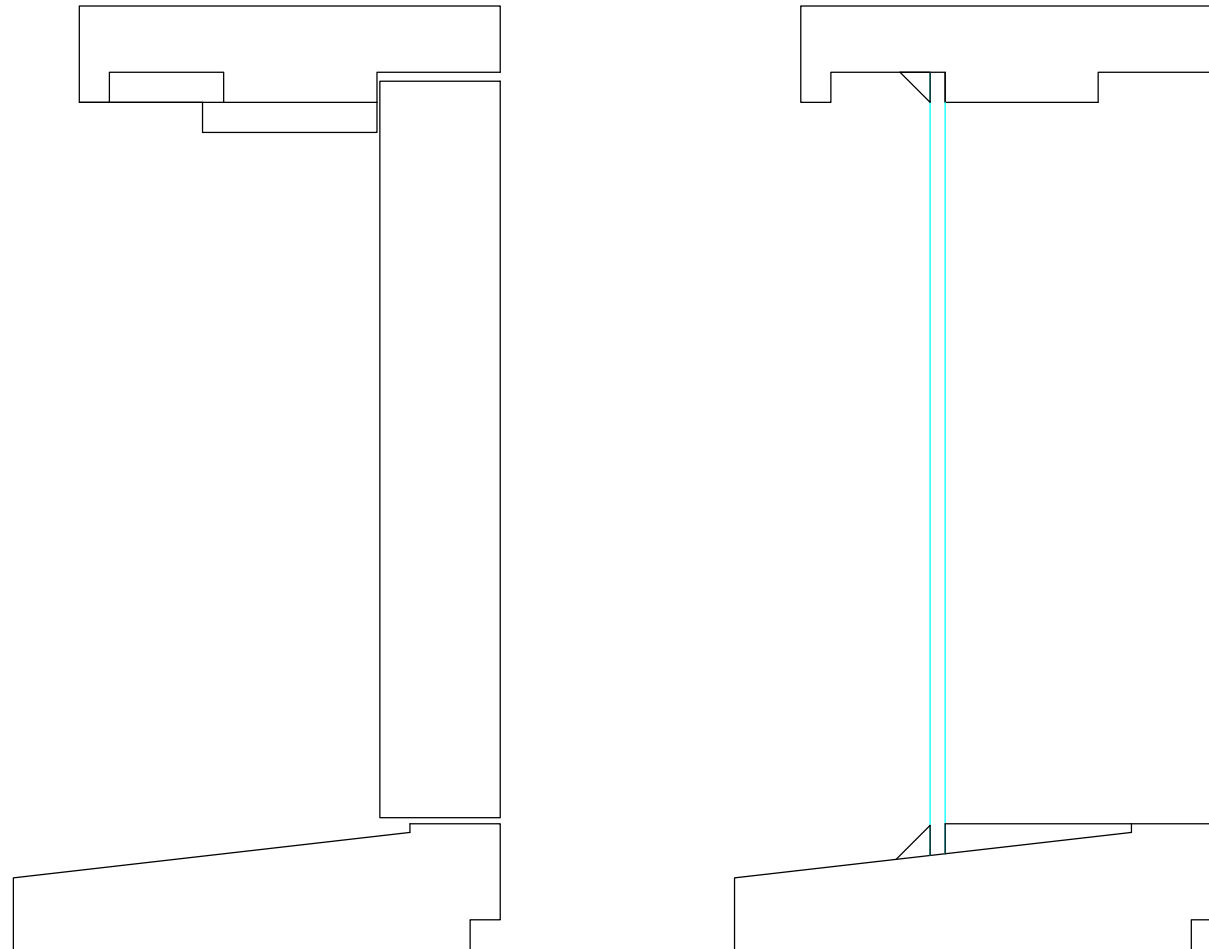
All drawings are not to scale. Refer to
 dimensions indicated.

Drawing are accurate as per date indicated.
 Please contact Normac Windows to confirm
 current specification.

All drawings remain the property of Normac
 Window. They cannot be reproduced or
 copied without prior consent.

ENTRY DOOR Plan

Single glazing
 Flyscreen compatible
 Includes wing moulds (opt)
 Hardware - Supplied and fitted by client



NÖREMAC® 
Windows & Doors


10/22 Bridge Street, Eltham AUSTRALIA 3095
Phone +61 (03) 9439 - 2365 Fax +61 (03) 9439 - 6578
info@normacwindows.com.au www.normacwindows.com.au

Normac Windows
Timber Window Diagrams &
Specifications

Please use these details when
referring to drawings

20.11.2013

Drawing Reference #0011 #NW/ES

 Viewing - OUTSIDE

The following drawings are to be used as a guide only.

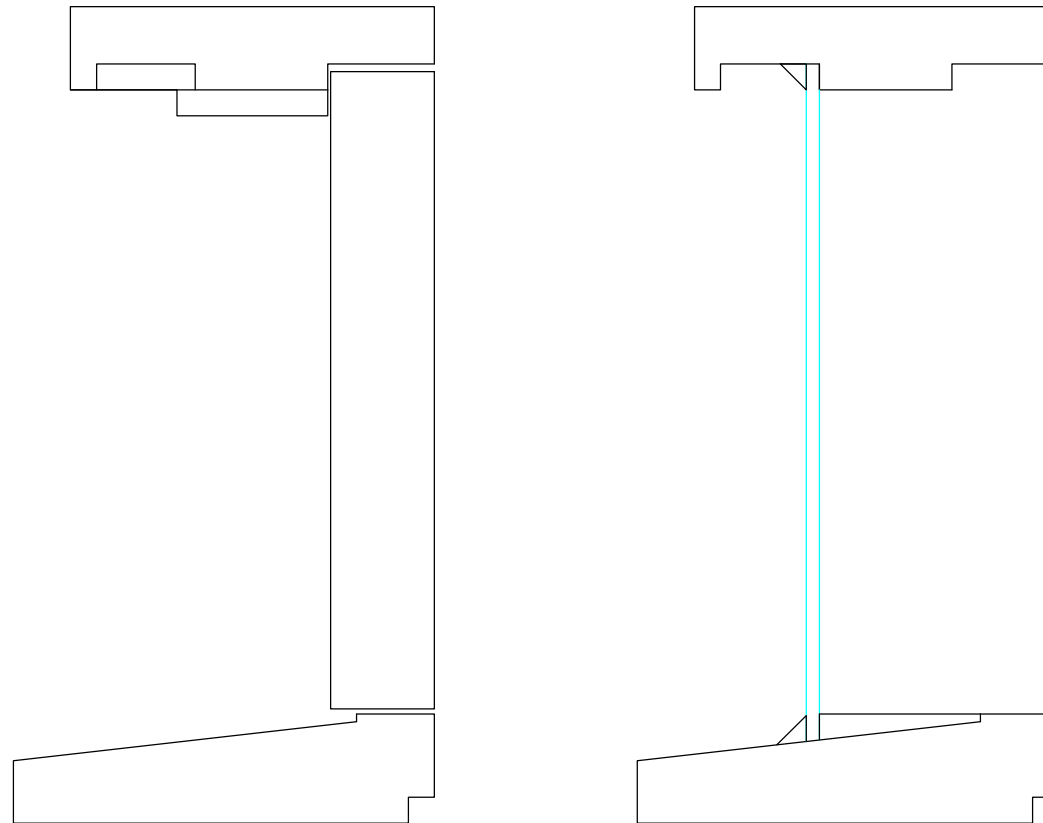
All drawings are not to scale. Refer to dimensions indicated.

Drawing are accurate as per date indicated. Please contact Normac Windows to confirm current specification.

All drawings remain the property of Normac Window. They cannot be reproduced or copied without prior consent.

ENTRY DOOR Section

Single glazing
Flyscreen compatible
Includes wing moulds (opt)
Hardware - Supplied and fitted by client



10/22 Bridge Street, Eltham AUSTRALIA 3095
 Phone +61 (03) 9439 - 2365 Fax +61 (03) 9439 - 6578
 info@normacwindows.com.au www.normacwindows.com.au

Normac Windows
 Timber Window Diagrams &
 Specifications

Please use these details when
 referring to drawings

20.11.2013

Drawing Reference #0013 #NW/ED

Viewing - OUTSIDE

The following drawings are to be used as a
 guide only.

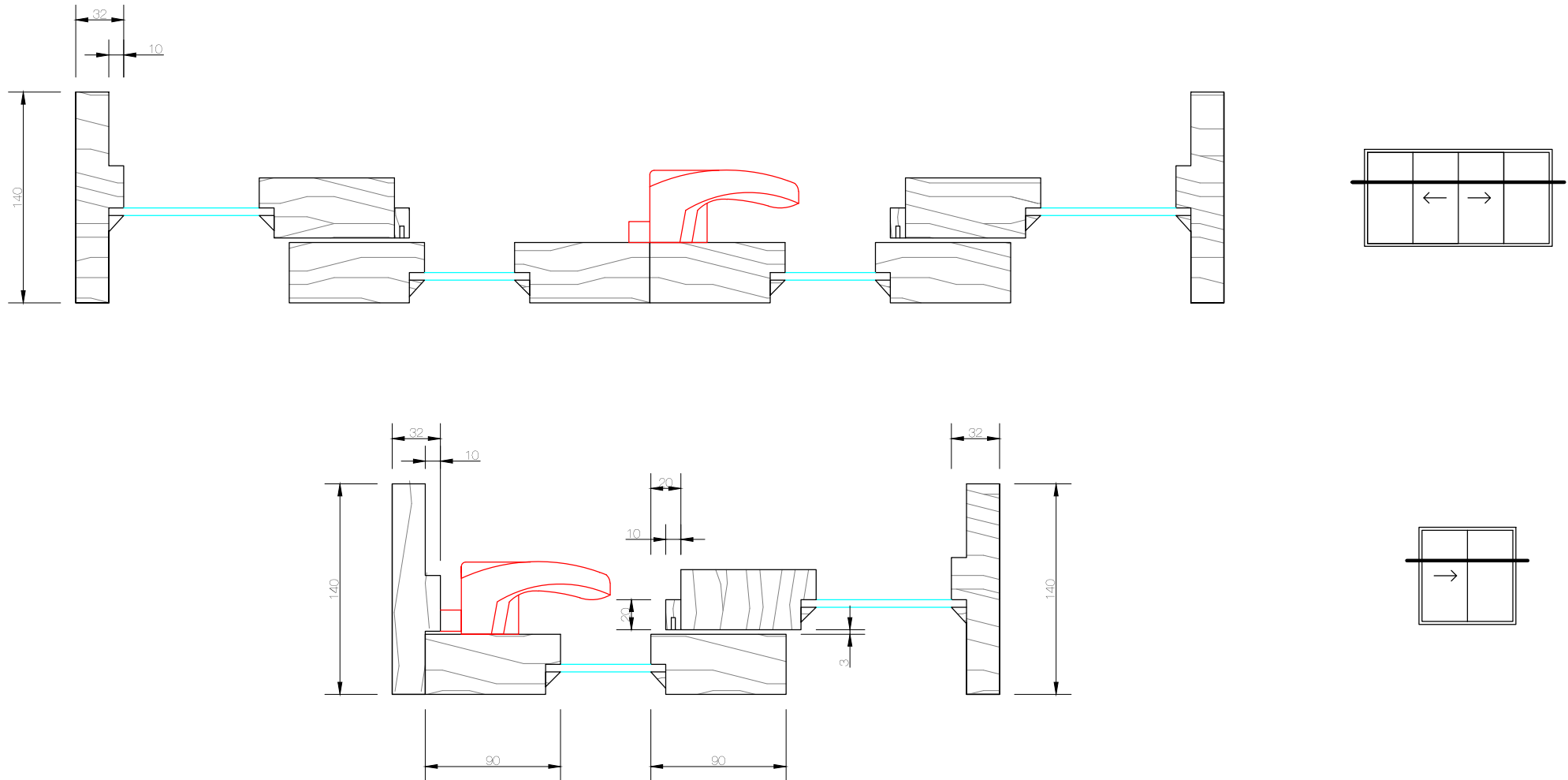
All drawings are not to scale. Refer to
 dimensions indicated.

Drawing are accurate as per date indicated.
 Please contact Normac Windows to confirm
 current specification.

All drawings remain the property of Normac
 Window. They cannot be reproduced or
 copied without prior consent.

ENTRY DOOR Profiles

Single glazing
 Flyscreen compatible
 Includes wing moulds (opt)
 Hardware - Supplied and fitted by client



NÖREMAC[®] 
Windows & Doors


10/22 Bridge Street, Eltham AUSTRALIA 3095
Phone +61 (03) 9439 - 2365 Fax +61 (03) 9439 - 6578
info@normacwindows.com.au www.normacwindows.com.au

Normac Windows
Timber Window Diagrams &
Specifications

Please use these details when
referring to drawings

20.11.2013

**Drawing Reference #00014
#NW/SP**

 Viewing - OUTSIDE

The following drawings are to be used as a
guide only.

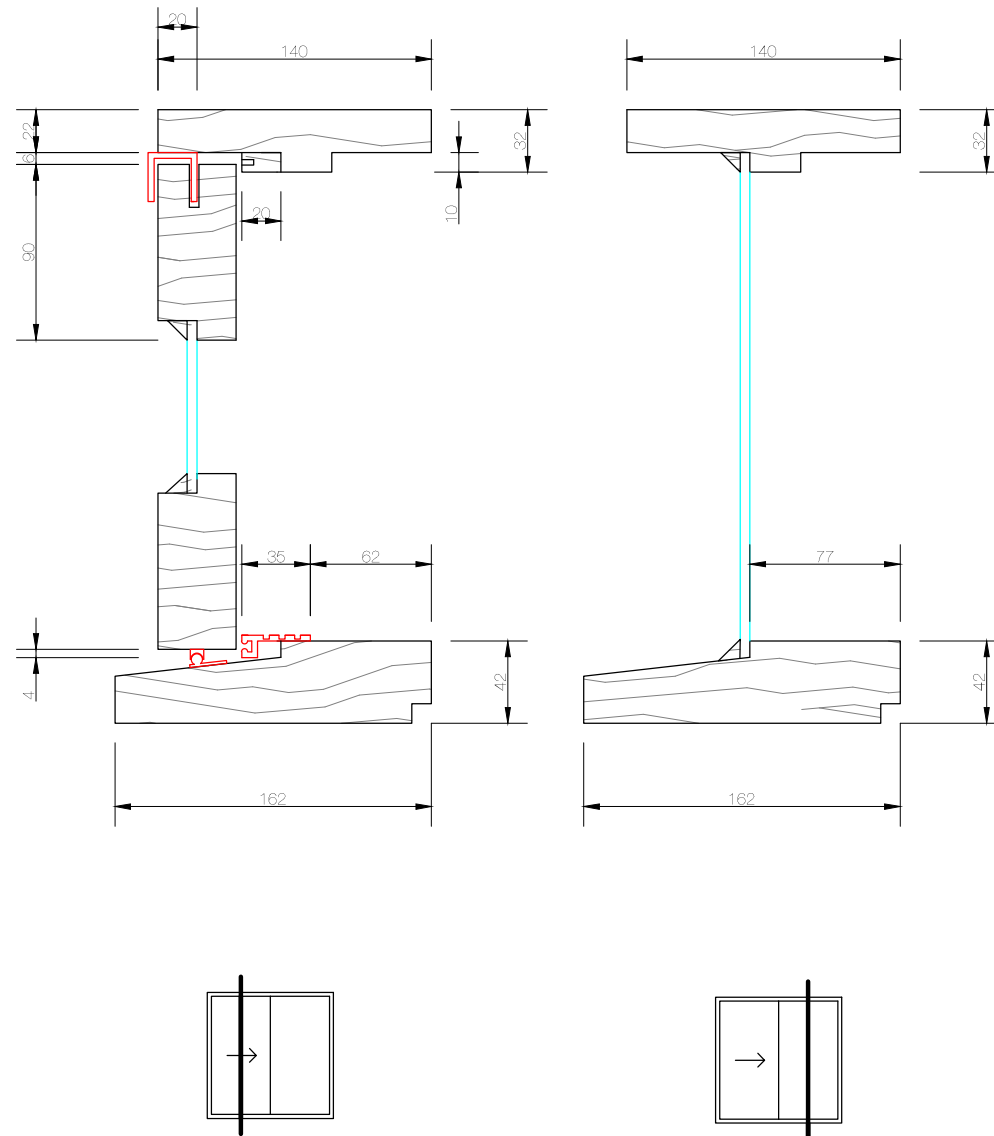
All drawings are not to scale. Refer to
dimensions indicated.

Drawing are accurate as per date indicated.
Please contact Normac Windows to confirm
current specification.

All drawings remain the property of Normac
Window. They cannot be reproduced or
copied without prior consent.

SLIDING DOOR Plan

Single glazing
Flyscreen compatible
Includes wing moulds (opt)
Hardware - Whitco Pull Handle
Whitco Sash Locks



NÖREMAC
Windows & Doors

10/22 Bridge Street, Eltham AUSTRALIA 3095
Phone +61 (03) 9439 - 2365 Fax +61 (03) 9439 - 6578
info@normacwindows.com.au www.normacwindows.com.au

Normac Windows
Timber Window Diagrams &
Specifications

Please use these details when
referring to drawings

20.11.2013

Drawing Reference #0015 #NW/SS

Viewing - OUTSIDE

The following drawings are to be used as a guide only.

All drawings are not to scale. Refer to dimensions indicated.

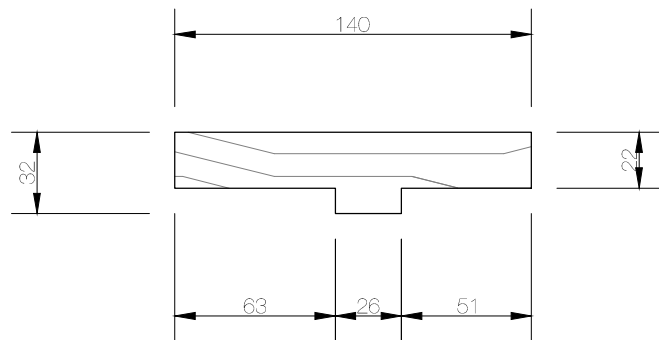
Drawings are accurate as per date indicated. Please contact Normac Windows to confirm current specification.

All drawings remain the property of Normac Window. They cannot be reproduced or copied without prior consent.

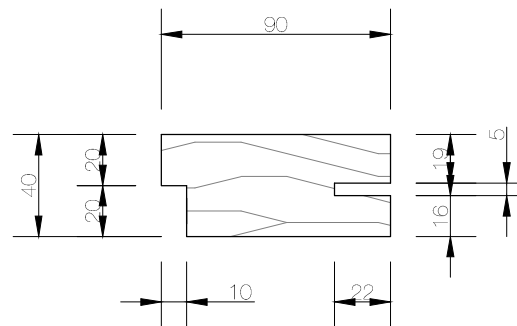
SLIDING DOOR Section

Single glazing
Flyscreen compatible
Includes wing moulds (opt)
Hardware - Whitco Pull Handle
Whitco Sash Locks

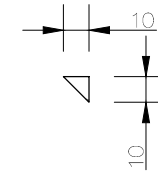
Head and Jamb/Stile



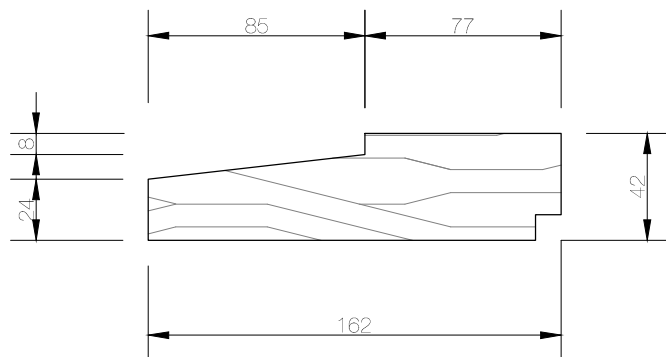
Door Head



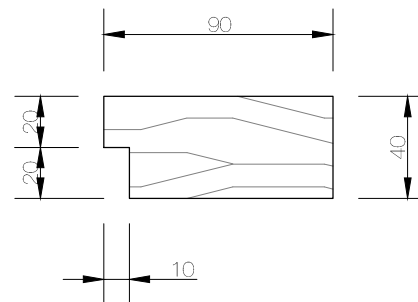
Glazing Bead



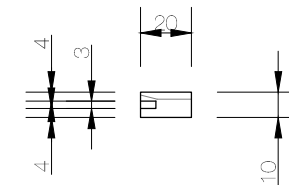
Sill



Door Bottom and Stile



Weather Seal Bead



NÖREMAC[®] 
Windows & Doors


10/22 Bridge Street, Eltham AUSTRALIA 3095
Phone +61 (03) 9439 - 2365 Fax +61 (03) 9439 - 6578
info@normacwindows.com.au www.normacwindows.com.au

Normac Windows
Timber Window Diagrams &
Specifications

Please use these details when
referring to drawings

20.11.2013

Drawing Reference #0016 #NW/SD

 Viewing - OUTSIDE

The following drawings are to be used as a guide only.

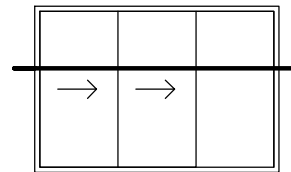
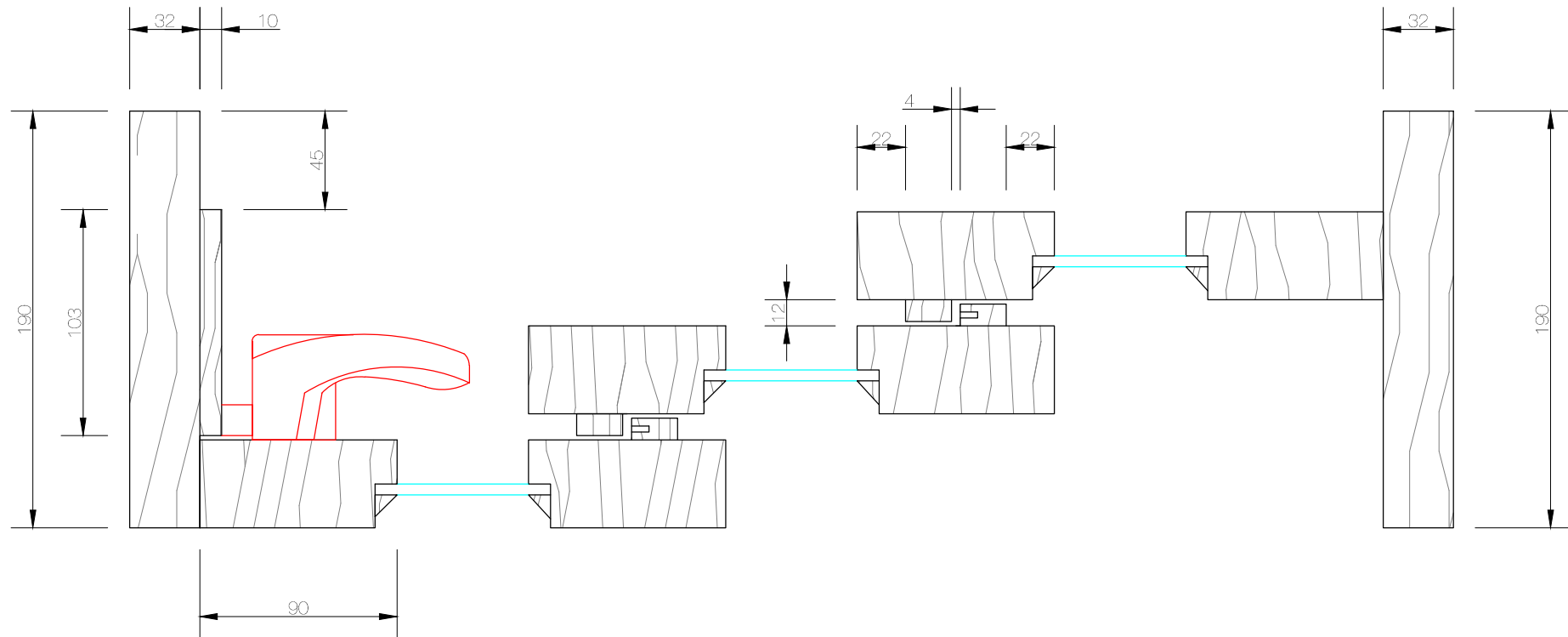
All drawings are not to scale. Refer to dimensions indicated.

Drawings are accurate as per date indicated. Please contact Normac Windows to confirm current specification.

All drawings remain the property of Normac Window. They cannot be reproduced or copied without prior consent.

SLIDING DOOR Profiles

Single glazing
Flyscreen compatible
Includes wing moulds (opt)
Hardware - Whitco Pull Handle
Whitco Sash Locks



NÖREMAC[®]
Windows & Doors

10/22 Bridge Street, Eltham AUSTRALIA 3095
Phone +61 (03) 9439 - 2365 Fax +61 (03) 9439 - 6578
info@normacwindows.com.au www.normacwindows.com.au

Normac Windows
Timber Window Diagrams &
Specifications

Please use these details when
referring to drawings

20.11.2013

Drawing Reference #0017 #NW/KP

Viewing - OUTSIDE

The following drawings are to be used as a guide only.

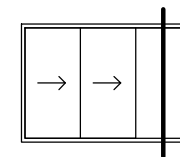
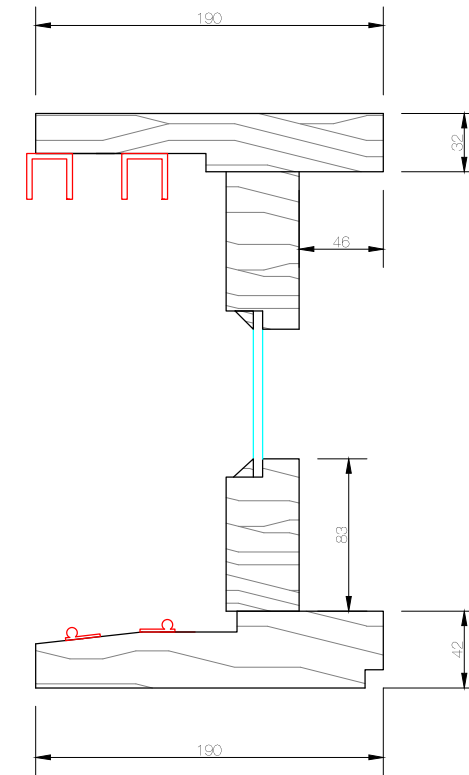
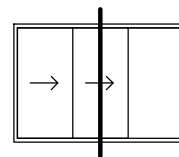
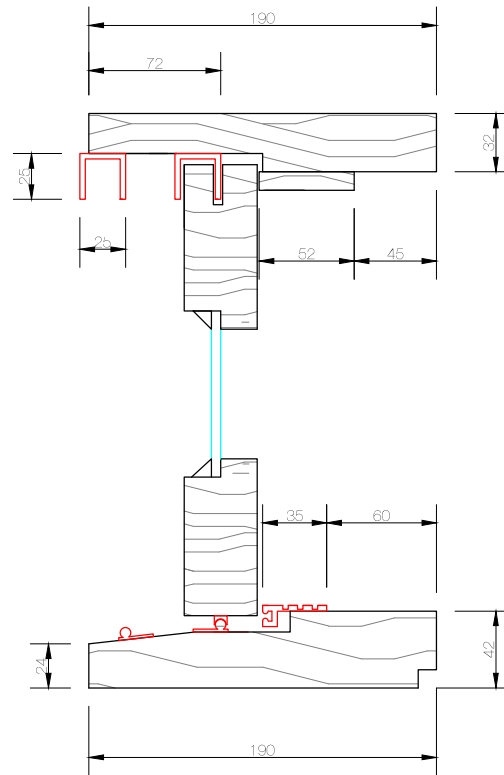
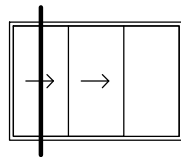
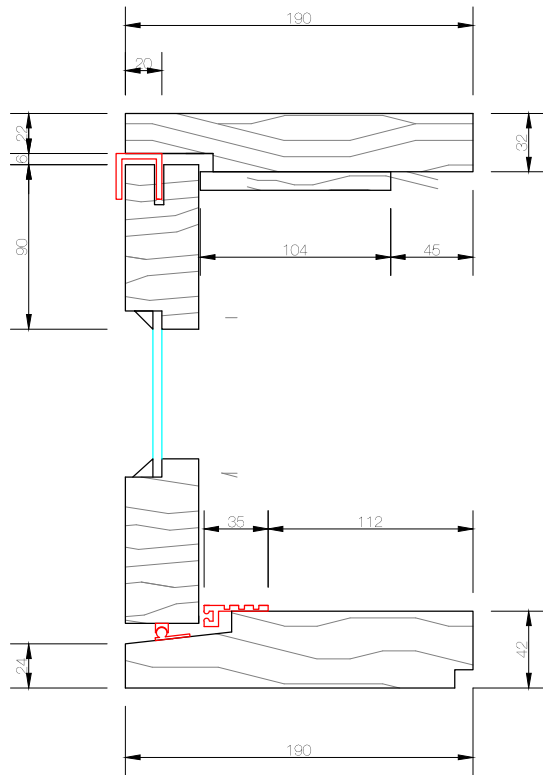
All drawings are not to scale. Refer to dimensions indicated.

Drawing are accurate as per date indicated. Please contact Normac Windows to confirm current specification.

All drawings remain the property of Normac Window. They cannot be reproduced or copied without prior consent.

SLIDGING STACKER DOOR Plan

Single glazing
Flyscreen compatible
Includes wing moulds (opt)
Hardware - Whitco Pull Handle
Whitco Sash Locks



NÖREMAC
Windows & Doors

10/22 Bridge Street, Eltham AUSTRALIA 3095
Phone +61 (03) 9439 - 2365 Fax +61 (03) 9439 - 6578
info@normacwindows.com.au www.normacwindows.com.au

Normac Windows
Timber Window Diagrams &
Specifications

Please use these details when
referring to drawings

20.11.2013

Drawing Reference #0018 #NW/KS

Viewing - OUTSIDE

The following drawings are to be used as a
guide only.

All drawings are not to scale. Refer to
dimensions indicated.

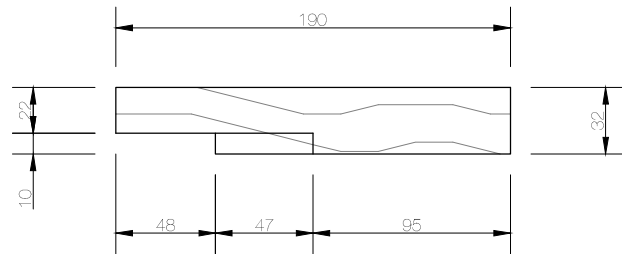
Drawings are accurate as per date indicated.
Please contact Normac Windows to confirm
current specification.

All drawings remain the property of Normac
Windows. They cannot be reproduced or
copied without prior consent.

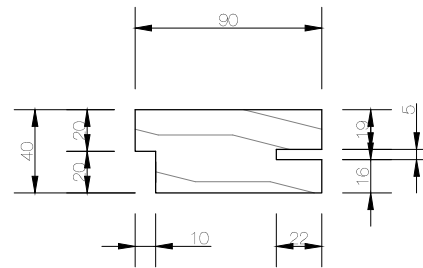
SLIDING STACKER DOOR Section

Single glazing
Flyscreen compatible
Includes wing moulds (opt)
Hardware - Whitco Pull Handle
Whitco Sash Locks

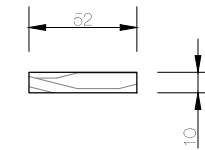
Head



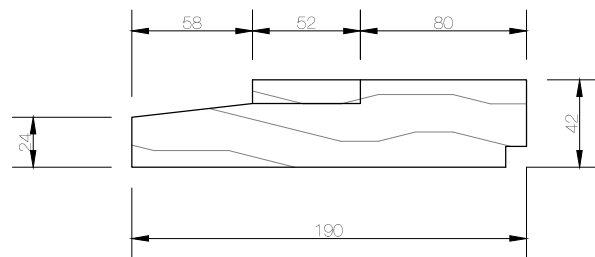
Door Head



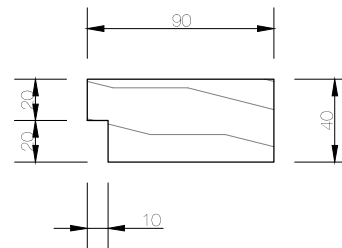
Door Bead



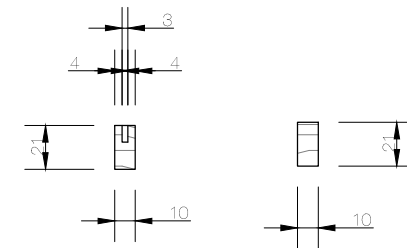
Sill



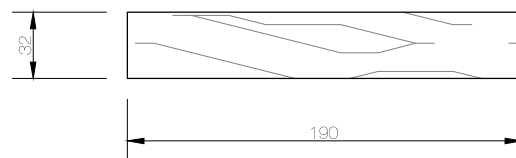
Door Bottom and Stile



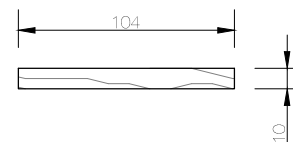
Weather Seal Beads



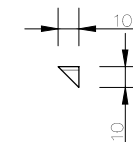
Jamb/Stile



Door Bead



Glazing Bead



NÖREMAC[®] 
Windows & Doors


10/22 Bridge Street, Eltham AUSTRALIA 3095
Phone +61 (03) 9439 - 2365 Fax +61 (03) 9439 - 6578
info@normacwindows.com.au www.normacwindows.com.au

Normac Windows
Timber Window Diagrams &
Specifications

Please use these details when
referring to drawings

20.11.2013

Drawing Reference #0019 #NW/KD

 Viewing - OUTSIDE

The following drawings are to be used as a guide only.

All drawings are not to scale. Refer to dimensions indicated.

Drawings are accurate as per date indicated. Please contact Normac Windows to confirm current specification.

All drawings remain the property of Normac Window. They cannot be reproduced or copied without prior consent.

SLIDING STACKER DOOR Profiles

Single glazing
Flyscreen compatible
Includes wing moulds (opt)
Hardware - Whitco Pull Handle
Whitco Sash Locks